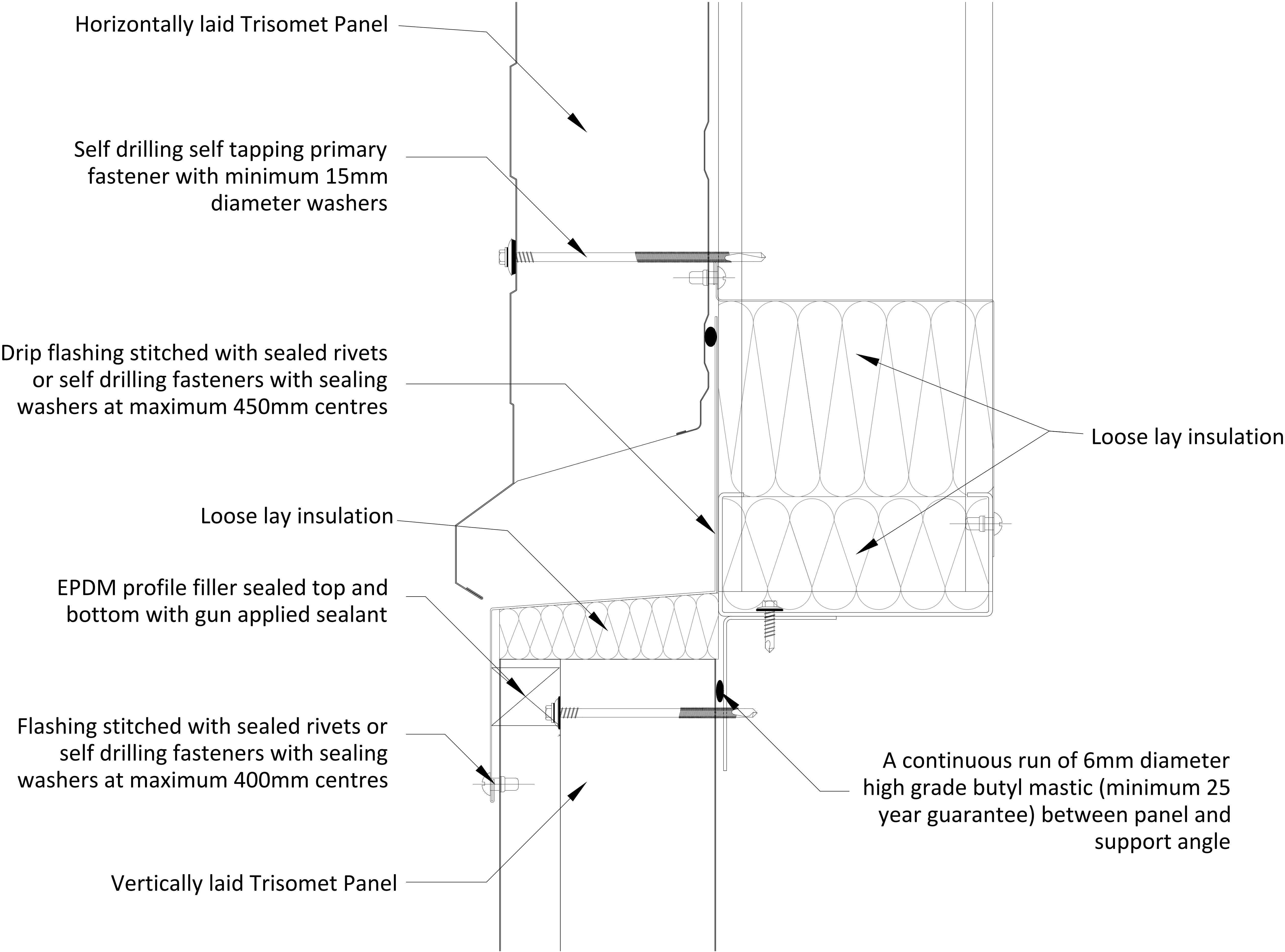


Tata Steel retain the right to ammend the construction and technical specifications shown on this drawing without prior notice.



All support steelwork by others

TRISOMET® U-VALUES

135mm Core = 0.15 W/m² K  
120mm Core = 0.16 W/m² K.  
100mm Core = 0.20 W/m² K.  
80mm Core = 0.25 W/m² K.  
60mm Core = 0.33 W/m² K.  
40mm Core = 0.46 W/m² K.

Psi & f-Factor

Y = 1.103W/mK.  
f = 0.579

STATED CALCULATION RESULTS ARE DEPENDENT ON COMPONENTS BEING AS SHOWN  
Computer Modelled in accordance with EN ISO 10211



**Building Systems UK**  
A Tata Steel enterprise

Technical Office - TEL : 01244 892199  
www.buildingsystemsuk.co.uk

PROJECT

Trisomet Horizontal  
Wall Details

TITLE

Vertical to Horizontal Break

DRAWN BY

LK

SCALE

NTS

APPROVED BY

PS

TOLERANCES

DATE

25/05/23

DRG. No.

E5-046-03