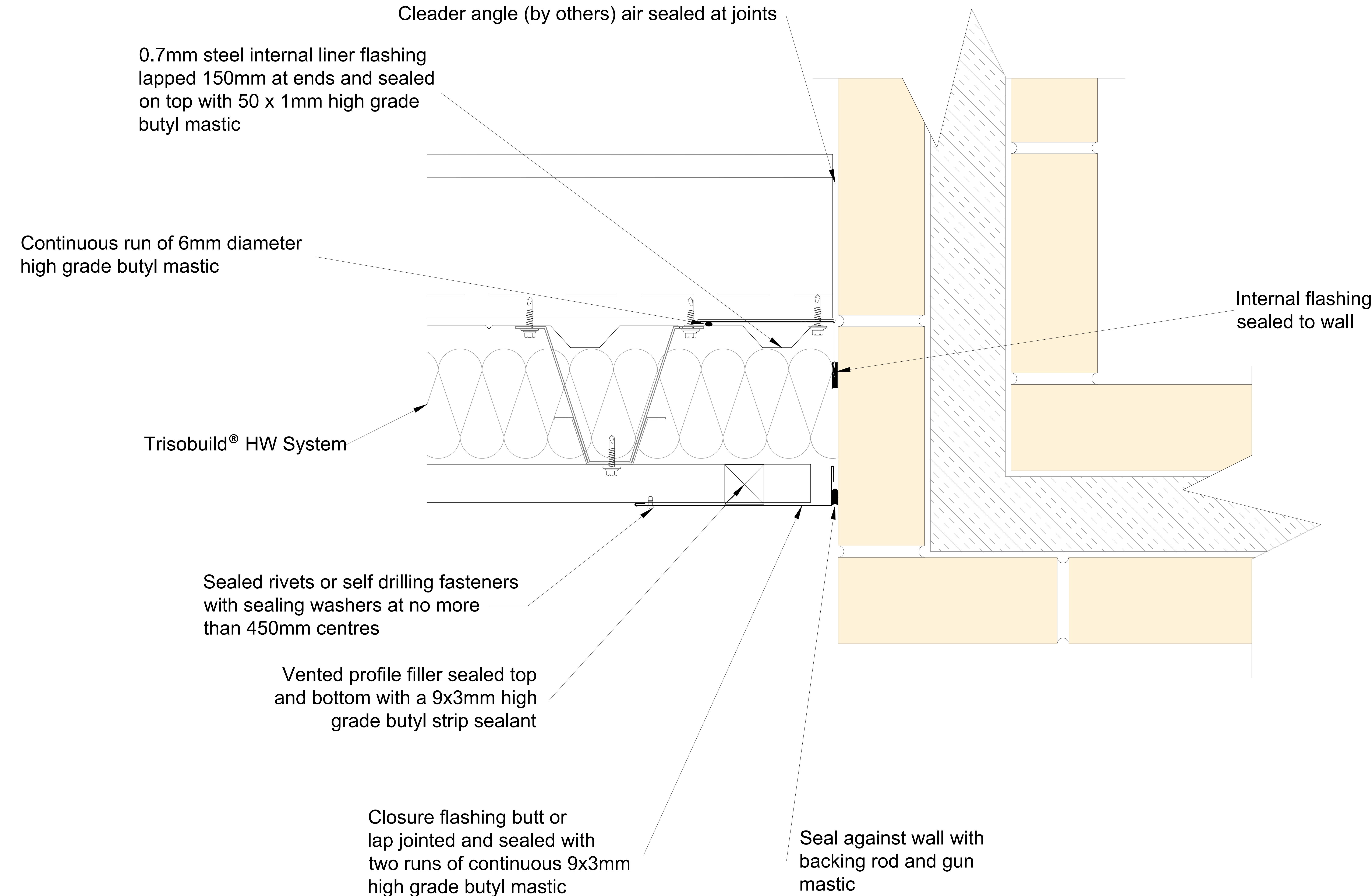


Tata Steel retain the right to ammend the construction and technical specifications shown on this drawing without prior notice.



All support steelwork by others

TRISOBUILD™ U-VALUES

The depth below refers to both the minimum bracket & insulation height to achieve the stated 'U' value when using a LP1000 liner

Depth 120 = 0.35 W/m²K.	Depth 220 = 0.19 W/m²K.
Depth 140 = 0.30 W/m²K.	Depth 230 = 0.18 W/m²K.
Depth 160 = 0.26 W/m²K.	Depth 240 = 0.18 W/m²K.
Depth 180 = 0.23 W/m²K.	Depth 250 = 0.17 W/m²K.
Depth 200 = 0.21 W/m²K.	Depth 260 = 0.16 W/m²K.
Depth 210 = 0.20 W/m²K.	Depth 270 = 0.16 W/m²K.

Junction 'psi' and 'f' values

Ψ = 0.01 W/mK.
f = 0.94

Stated calculation results are dependent on components being as shown.
Computer modeled in accordance with EN ISO 10211



Building Systems UK
A Tata Steel enterprise

Technical Office - TEL : 01244 892199
www.buildingsystemsuk.co.uk

PROJECT		Typical Trisobuild HW Details	
TITLE		Wall Abutment	
DRAWN BY	LK	SCALE	NTS
APPROVED BY	PS	TOLERANCES	
DATE	07/06/23	DRG. No.	W1-028-03