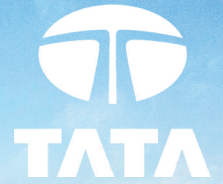


# Building Systems UK

A Tata Steel enterprise



## Trisobuild® site assembled insulated roof and wall systems at a glance

Opening up design and performance possibilities for your project. Whatever functionality be it fire resistance, acoustic performance, structural capacity or aesthetic appeal there is a solution in Building Systems UK's Trisobuild® profiled system range. All available with LPCB certification, bespoke Environmental Product Declarations and 25 year Platinum Plus system guarantee.

Building Systems UK have a complete range of construction products and services to support your sustainable construction needs - backed by multi decade guarantees for sustainable, durable and guaranteed performance. Our extensive [technical support is available](#) to assist on design calculations, acoustics and fire design. Our technical team can help you with your specification drafting - or you can use our [SPECGEN tool](#).



### Key benefits of the secret fix insulated architectural wall panel system range



Fully  
accredited



Fire  
resistant



Quick  
installation



Fully  
guaranteed



Highly  
durable



Thermally  
efficient



Full  
traceability



Acoustic  
performance



Low air  
permeability



# Trisobuild® site assembled insulated roof system

Wide range of profile and finish variations including curved roof solutions in a wide array of colours.

[Learn more](#)

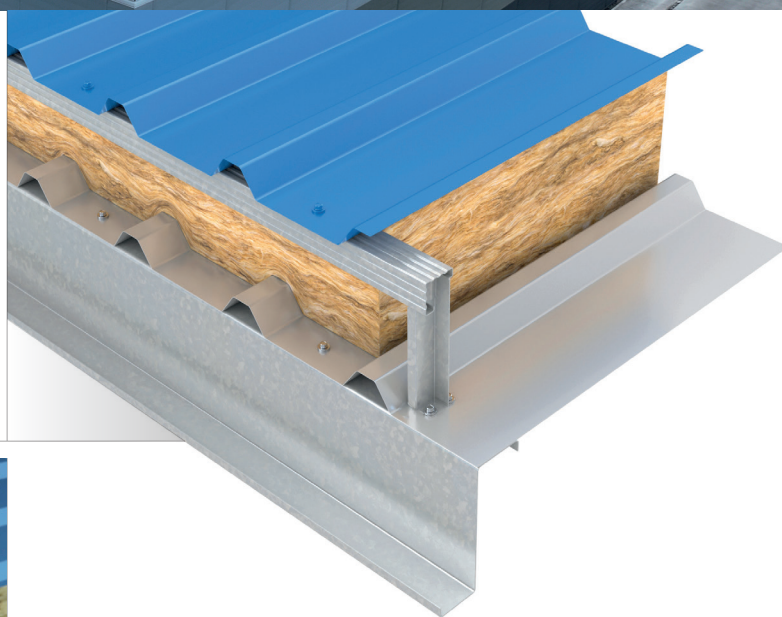
[Download datasheets](#)



## Trisobuild® R and RWL

Our roof and walkable liner (R and RWL) systems are fully compliant with ACR non-fragility standards. Our roof systems can be adapted to suit a wide range of U-value performance requirements with proven air-tightness that meet and surpass all Building Regulation requirements. Available with a walkable liner option and a range of GRP in plane rooflight options to provide natural diffused daylight into your building.

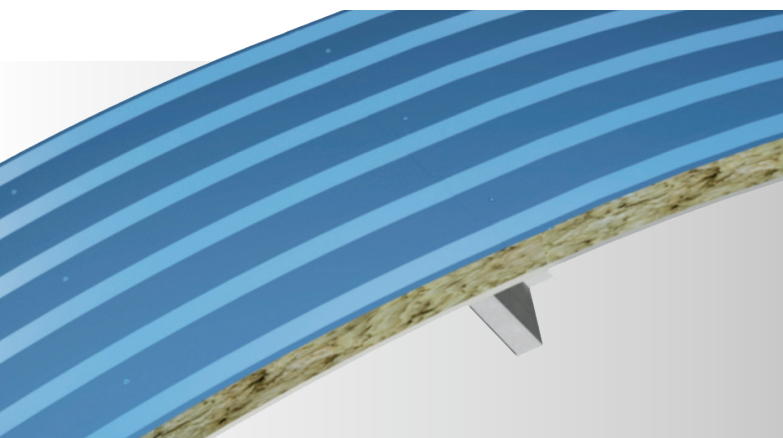
[Learn more](#)



## Trisobuild® CR

The curved roof (CR) system provides the same flexibility as our standard roof systems, with the addition of enhanced detailing providing proven weather tightness performance down to a naturally curved 40m radii. Advice and specification can be tailored to the project requirements.

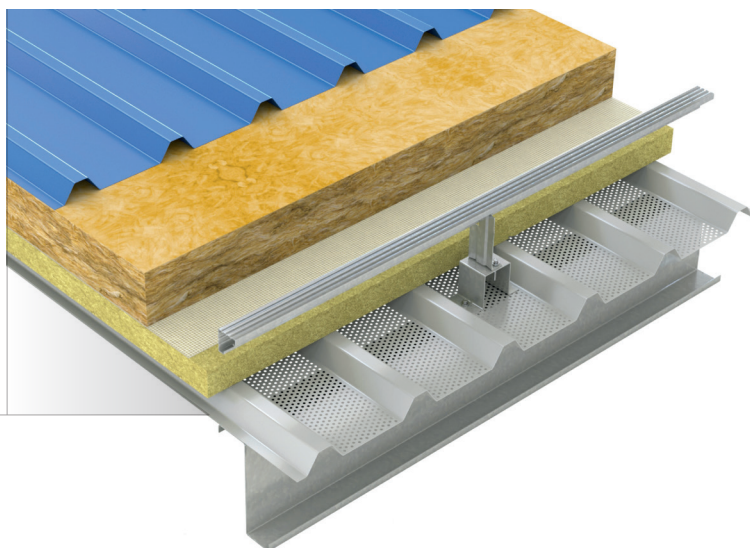
[Learn more](#)



## Trisobuild® SA (Acoustic)

Our range of sound absorption (SA) systems are suitable for roof and wall applications, that can be specified to meet the required acoustic performance standards for your project. Whether you are looking to consider sound reduction, sound absorption or rain noise reduction, our engineers will be able to design a system that meets your needs.

[Learn more](#)



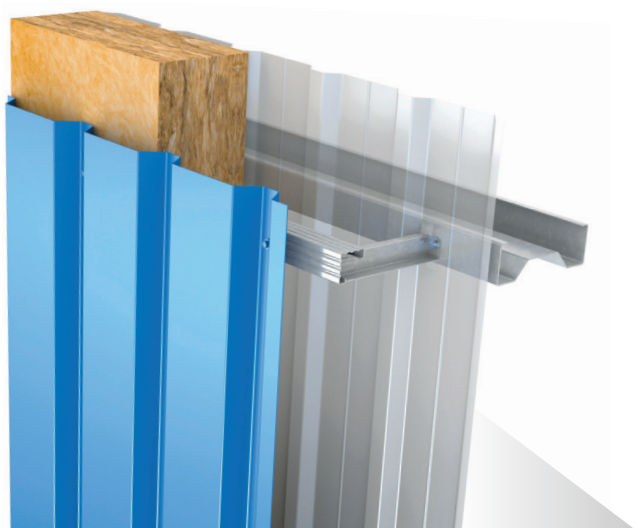


# Trisobuild® site assembled insulated wall system

Wide range of profile and finish variations including vertical, horizontal and enhanced fire performance options.

[Learn more](#)

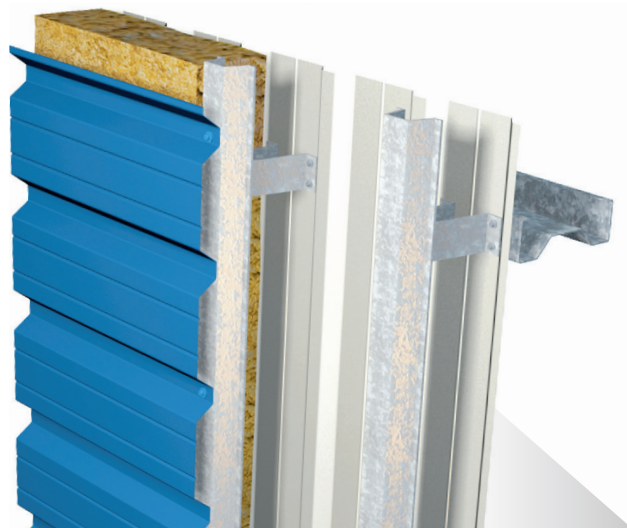
[Download datasheets](#)



## Trisobuild® VW

Vertical wall (VW) systems incorporate the Instaloc® Plus spacer system, can be specified with non-combustible components and are available in a range of standard trapezoidal and sinusoidal profiles. The beauty here is that the system can be tailored to your specific performance requirements, incorporating unique aesthetics and fast and efficient installation.

[Learn more](#)



## Trisobuild® HW

Horizontal wall (HW) systems comprise of a vertical liner fixed to standard horizontal secondary cladding rails, with a robust Instaloc® HW spacer system which spans between these rails and supports a range of horizontally laid external trapezoidal, plank and sinusoidal profiles. Our Trisobuild® system enables extended vertical grid centres providing fast and efficient installation, options for non-combustibility and a unique look for any project.

[Learn more](#)

## Trisobuild® FW



Our Trisobuild® FW (fire wall) systems offer fire insulation resistance ratings of EI15, EI30 and EI60. The systems can be specified as vertical or horizontal, they can achieve their declared performance with standard installation methods and do not require internal stitching. Design service with regards boundary wall requirement available.

[Learn more](#)



	Trisobuild® R	Trisobuild® RWL	Trisobuild® CR	Trisobuild® SA	Trisobuild® VW	Trisobuild® HW	Classification/Standard
Min. U-value (W/m²K.)	0.10	0.10	0.10	0.10	0.14	0.16	BR 443
Best external wall reaction to fire classification	NA	NA	NA	A1 (wall)	A1	A1	BS EN 13501-1
Best external roof fire exposure	BROOF(t4)	BROOF(t4)	BROOF(t4)	BROOF(t4)	NA	NA	BS EN 13501-5
Fire resistance range (FW)*	-	-	-	-	EI15 - EI60	EI15 - EI60	BS EN 13501-2
PV ready	✓	✓	✓	✓	✓	✓	NA
Roof-curling system	NA	NA	✓	NA	NA	NA	EN 12865
Walkable roof liner	NA	✓	NA	NA	NA	NA	ACR(M) 001-2019
Max. sound absorption class	NA	NA	NA	class A	NA	NA	NA
Max. sound resistance, Rw (dB)	48.8	50.3	48.8	51.7	48.1	47.8	NA

\* Full system specification required

## Platinum® Plus 25 year system guarantee.

Our range of site assembled insulated wall and roof systems and a range of system components including fixings, roof lights, sealants and fillers are available with our Platinum® Plus system guarantee providing a complete building envelope solution guarantee for 25 years.

ColorcoatHPS200 Ultra® and Colorcoat Prisma® pre-finished steel is used as standard, offering long-term performance with the Confidex® Guarantee and providing peace of mind for up to 40 years. [Click here to learn more](#)



## Supporting you from start to finish...



### Professional support and design

Our [dedicated technical team](#) are available to provide support and advice on the best product for your project, and are on hand to help with:

- Condensation analysis
- Fire design
- Full range of structural design calculations
- Acoustic design
- Specification software
- Robust typical construction details
- Bespoke EPD service
- BREEAM credit assessment
- RIBA approved CPD seminars



### Sustainable performance

Building Systems UK's vision is to 'enable the creation of sustainable spaces where we live work and play'. As a manufacturer we have a duty to operate responsibly and in a transparent way. Building Systems UK are one of the most transparent and reported construction product manufacturers in the UK, with a unique offering of project specific and bespoke [Environmental Product Declarations](#).

This is enabled by our unique operatorship of an Environmental Product Declaration Programme.

Building Systems UK operations, supply chain and products are certified under the BRE Responsible Sourcing Framework Specification BES 6001.

We are able to help our customers to operate more sustainably by providing guidance on the specification of our products and the impact on obtaining credits under building certification schemes such as BREEAM.

### Digital Tools

Generate perfect building envelope systems that will bring your design to life. Our online specification generator tool has been designed to help you create the right specification to suit the needs of your project, making sure all roofing and cladding components listed are compatible and perform as a guaranteed system. [Click here to use our SPEC GEN tool](#).

Our [BIM DNA Profiler](#) has been designed to minimise data overload and will allow users, at whatever stage they are in the construction process, to retrieve the exact level of BIM data they require – and in all required file formats (eg. AutoDesk).

Also available via [NBS Source online](#) specification platform.



Download datasheets





# [www.buildingsystemsuk.com](http://www.buildingsystemsuk.com)

## Trademarks of Tata Steel UK Limited

Trisobuild®, Colorcoat HPS200 Ultra®, Colorcoat Prisma® and Platinum® Plus are registered trademarks of Tata Steel UK Limited.

While care has been taken to ensure that the information contained in this publication is accurate, neither Tata Steel, nor its subsidiaries, accept responsibility or liability for errors or for information which is found to be misleading.

Before using products or services supplied or manufactured by Tata Steel and its subsidiaries, customers should satisfy themselves as to their suitability.

Copyright 2025

Tata Steel UK Limited

## Building Systems UK (A Tata Steel Enterprise)

Shotton Works

Deeside

Flintshire

CH5 2NH

United Kingdom

T: +44 (0) 1244 892199

E: [technical.structuralproducts@tatasteelurope.com](mailto:technical.structuralproducts@tatasteelurope.com)

Registered Office: 18 Grosvenor Place, London, SW1X 7HS, Registered in England No. 02280000

Doc No: BSUK-E-0018-01