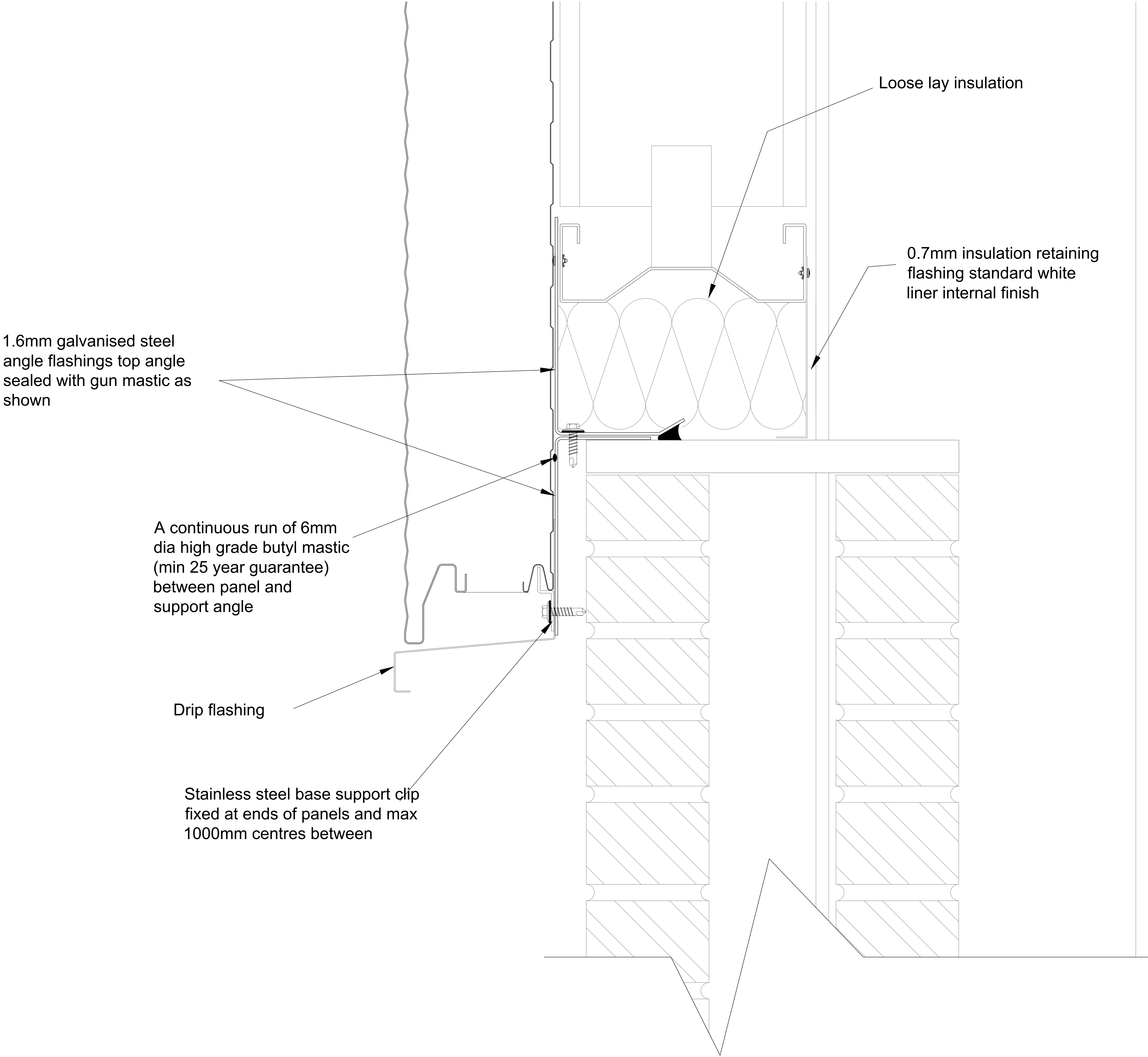


Tata Steel retain the right to ammend the construction and technical specifications shown on this drawing without prior notice.



TRIMAPANEL U-VALUES

70mm Core = 0.31 W/m² K.
90mm Core = 0.24 W/m² K.
120mm Core = 0.17 W/m² K.

Psi & f-Factor

Y = 0.464W/mK.
f = 0.702

STATED CALCULATION RESULTS ARE DEPENDENT ON
COMPONENTS BEING AS SHOWN
Computer Modelled in accordance with EN ISO 10211



Building Systems UK
A Tata Steel enterprise

Technical Office - TEL : 01244 892199
www.buildingsystemsuk.co.uk

PROJECT

Trimapanel System
Typical Details

TITLE

Dado Wall Drip

DRAWN BY

LK

SCALE

NTS

APPROVED BY

PS

TOLERANCES

DATE

21/06/23

DRG. No.

W2-008-03

All support steelwork by
others